

406 CR 142



With 102 ft. of shoreline on Lake Buchanan, this house was constructed with ideal lake access and views in mind. The 3 bedroom, 2 bath main home features an open floor plan with huge windows providing unobstructed views of massive Lake Buchanan. There is a large one bedroom, one bath apartment over the garage that is ideal for guests, extended family or teenage kids. It is just a few easy steps from the large back porch to the shoreline of Lake Buchanan. From there, a gangway leads to a large covered boat dock – perfect for fishing, swimming or sunset gazing. Lake Buchanan (the largest lake on the Highland Lakes chain) is the #1 ranked fishing lake in Texas. It is also a great cruising, skiing, kayaking and swimming lake. Located in the Rocky Point subdivision on the east side of Lake Buchanan, 15 minutes from Burnet, 45 minutes to Leander / Cedar Park and just over an hour to Austin.

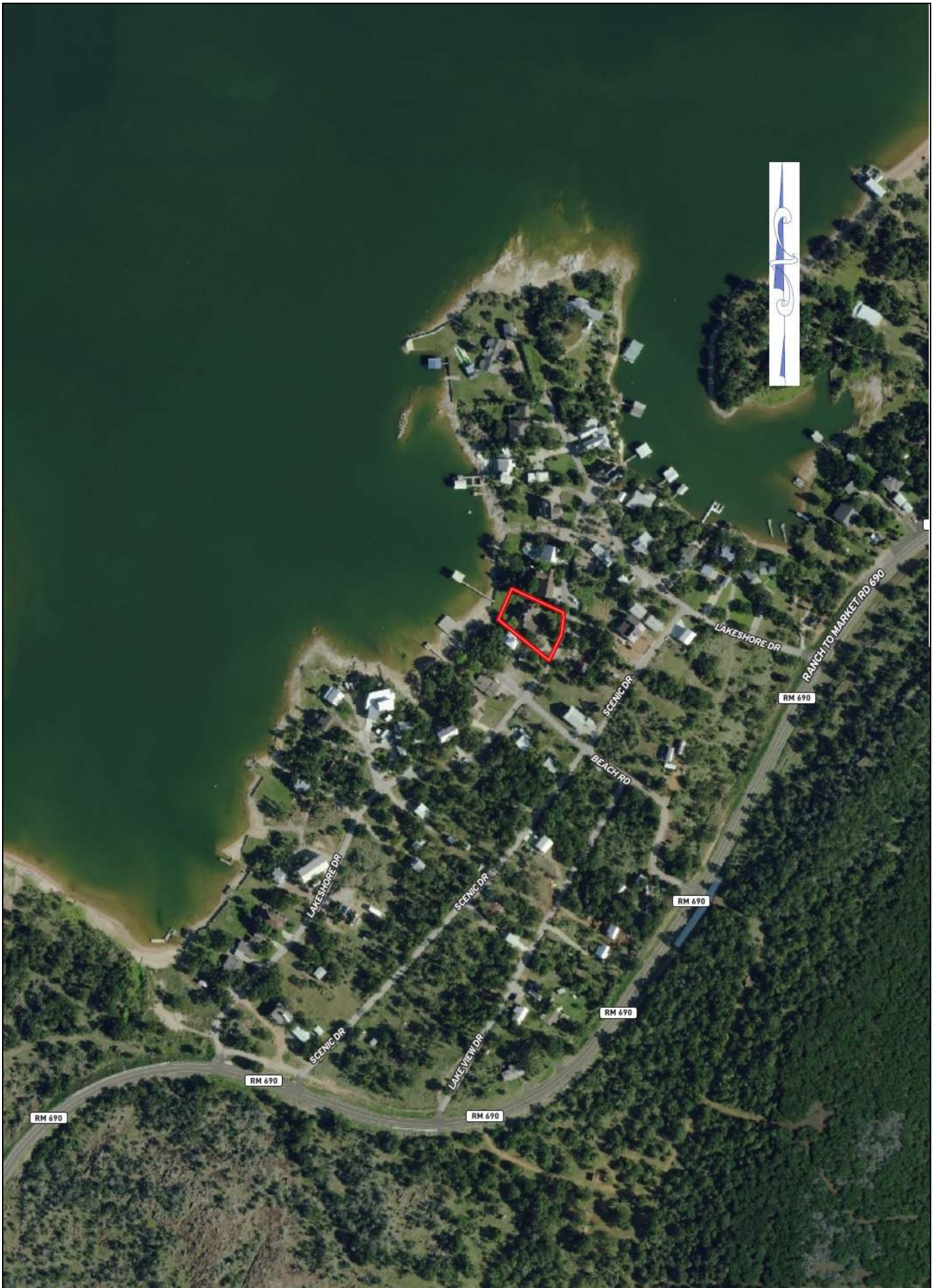
\$795,000



This information is deemed reliable but is not guaranteed. cc.



Waterfront Home









Property Summary Sheet

LOCATION: 406 County Road 142

IMPROVEMENTS:

Home

2,596 sq. ft. 3 bedroom, 2 bath

Oversized attached garage

Apartment

Located above 2 car detached garage

1 bedroom 1 bath

Covered boat dock

WATER: Well

WATER FRONTAGE: 102 feet on Lake Buchanan

RESTRICTIONS: Yes

SCHOOL DISTRICT: Burnet

TAX RATE: 1.54

All sizes, areas, volumes, lengths and distances contained herein are only approximations and are not intended, nor should they be accepted as exact measurements. All information furnished is from sources deemed reliable, but no warranty or representation, expressed or implied, is made to the accuracy thereof, and is submitted to prior sale, withdrawal or other changes in the price or terms without notice.



email: ranches@jimberryranchsales.com